



# **The World's Most Versatile** **Modular Display** **System**

Designed & Manufactured In The UK





## Contents.

Introduction	5
How T3 Works	7
Key Benefits	9
T3 Airframe	11
T3 Fabframe	13
T3 Shell-kit	15
T3 Flexi	17
Project Examples	19
How We Work	27

## Contents

**One Connector**  
**Endless Possibilities.**





# Modular.

## Introduction



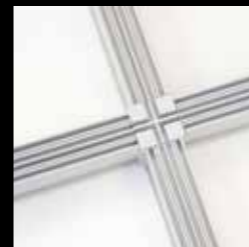
Manufactured in the UK for over ten years, T3 is the world's most innovative, easy to build, compact and flexible modular display system. With no tools required or levers to push, no other system can compete on speed of build or versatility.

The T3 range has been designed to be adaptable to a wide variety of display environments; exhibition stands, point of sale, conference sets, mobile bars, counters, light boxes, photobooths and hanging banners. The possibilities are endless.

T3 is able to carry all types of media including rigid, roll-able panels, tension fabrics and textiles. 60" screens, projector screens, shelving and display cabinets can all be easily incorporated. Add to this a lifetime guarantee!



**‘Twist & Lock’**  
It's That Simple...



# Technical.

## How T3 Works

The key components consist of an aluminium beam and a connector which join together with a brilliantly simple patented, twist & lock action. All components are fire rated and require no tools or levers.

T3 Airframe - Rigid or roll-able graphic substrates such as foamboard, ACM and acrylic can all be applied using 25mm magnetic tape. Structures can be built up to 6m high.

T3 Fabframe - Tensioned fabric graphics or textiles are applied using our T3 comb. These can be backlit to create light-walls which again can be built to 6m high.

All T3 systems are completely interchangeable, re-configurable and can be used time and time again.



# Benefits.

## Why Use T3

### Modular System, Bespoke Finish.

#### UK Designed & Manufactured

Any standard beam can be supplied within 24 hrs. All quotes and drawings guaranteed within 24 hrs.

#### Reduce Labour Costs

No need for skilled labour, structures can be built in minutes not hours.

#### Reduce Shipping & Storage Costs

T3 packs down smaller than most systems, certain stands can be transported in the back of a car.

#### No Tools Required

T3 is a simple twist & lock action - no locks to fail, no beams to line up, no levers to push.

'We challenge any system to beat T3 for speed of build and dismantling'

#### Quick & Simple To Build

Structures can be prebuilt and adjusted without extensive redesign.

#### Maximise Budget

A single stand can be re-configured and re-used to suit your whole exhibition programme.

#### Reconfigurable

All our beams can be used in the vertical and horizontal configurations giving maximum versatility.

#### Maximise Return

Spend time developing ideas with your client, not learning the system!





# Versatile.

## T3 Airframe



T3 Airframe is a unique modular display system, designed to provide easy display solutions in a variety of settings. Whether you require a small starter display or a large-scale project, T3 Airframe forms the building blocks for a solution that can grow with your needs.

Seamless, T3 Airframe enables any rigid or roll-able substrate to be fixed to the system, such as Foam boards, Correx, Acrylics, PVC, Aluminium Composites and many more.

Quick and easy, T3 Airframe will save you money; Self-build friendly there is no need for skilled labour or specialist transport.

Extremely compact and easy to store, T3 Airframe reduces the need for storage with even large stands fitting into the back of a car.





# Tension.

## T3 Fabframe



Elegantly simple, T3 Fabframe has been designed to carry printed fabrics or textile graphics and works around the same-patented connector. Strong and completely re-configurable, the system enables interchangeable panels to be fitted quickly and easily with no tools required, offering unrivalled flexibility and speed of build.

Rear illumination is also easily achieved with T3 Fabframe, so large light-boxes and backdrops can be simply and cost effectively built and re-used.



T3 Fabframe takes full advantage of the developments made in fabric printing technology. The many benefits for using large format fabric graphics including; excellent print quality, ease of transport, durable and of course lightweight and washable.



# Convert.

## T3 Shell-Kit

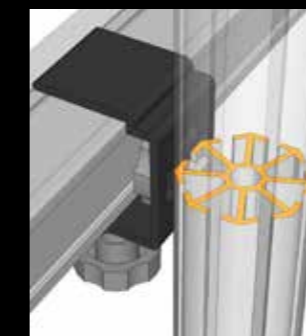


T3 Shell-Kit has been designed with budget in mind. By using a specially designed clamp, shell scheme spaces can be converted and clad to create seamless yet professional display environments.

By utilising the T3 clamp, T3 can be fixed directly to any shell scheme throughout the world without the need for tools, saving you time and money.

This framework is then clad with a roll-able, rigid or fabric graphic. Incredibly compact, T3 Shell-kit sits just 60mm away from the shell scheme wall, maximizing your floor space.

Uniquely designed, T3 Shell-kit can be broken down into manageable lengths for ease of transport, with the average 3x3 shell scheme stand fitting in a bag over your shoulder.





# Flexible.

T3 Flexi



T3 Flexi is a revolution in modular display. The flexible beam allows T3 walls to curve into almost any angle or shape whilst retaining strength and rigidity.

The practical application for T3 Flexi means you will always have a display that can fit into any area. No need to worry if your display will fit, just turn up, build and curve.

T3 Flexi is fully compatible with the entire T3 range. Plinths, counters, large screens, light-boxes and shelving can all be integrated. All graphic panels are the same size for simplicity and ease of artwork, allowing you to effortlessly adapt or extend.

With a lifetime guarantee, you have a system that you can rely on with virtually limitless configurations.



# Modular.

"Using T3 has considerably reduced our shipping budget, and we have saved money at US shows where we are obliged to use Union labour - the simplicity of the system means we are up and running much faster than more traditional stand build methods."

Kevin Emmott  
CALREC



Exhibition Stands

## Reconfigure & Re-use.



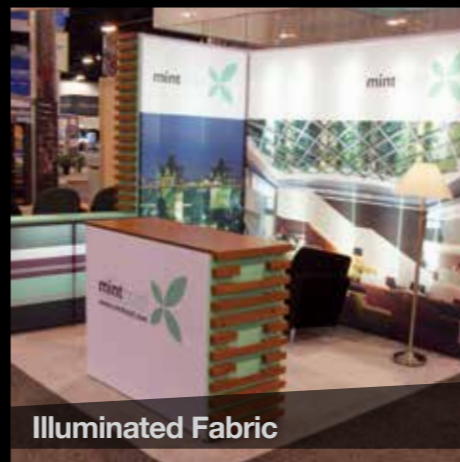
Catering Areas



Bars & Counters



Meeting Areas



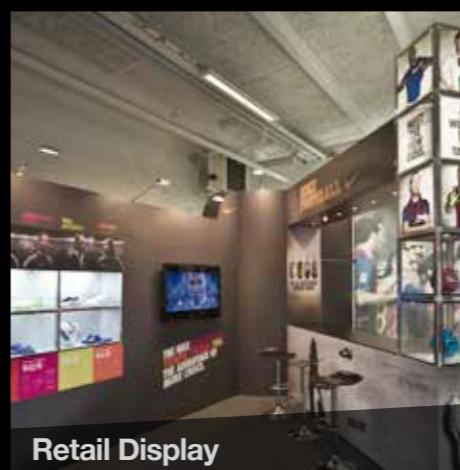
Illuminated Fabric



Medium Stands



Kitchen Sets



Retail Display



Plinths



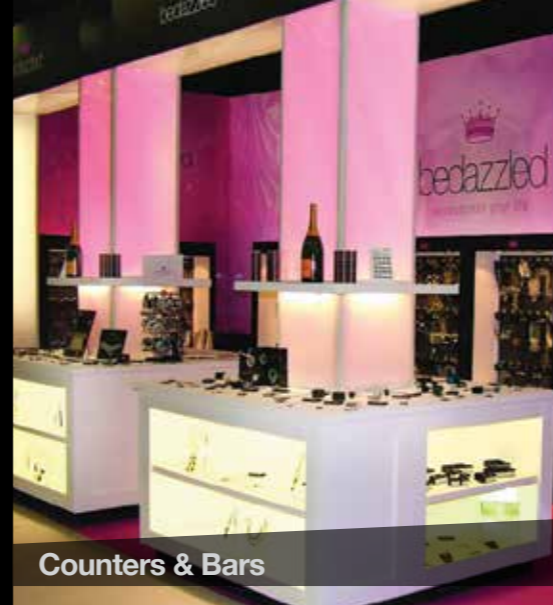
Fast &  
Flexible.

Possibilities

# Seamless.

"T3 Airframe and Fabframe are a dream to work with! They can transform any space into almost anything you need - Walls, display cases or even booths. So easy to set up, anyone who had a set of Lego, Stikklebricks or Meccano will be able to use this with ease - for everyone else, all you need to do is twist and lock."

Emma Lee  
IPS SPECIALS



Counters & Bars

Lightweight  
Easy To  
Transport.



Conference Kits

Possibilities



Experiential



Signage



Integrated AV Equipment



Illuminated Acrylic



Ticket Desks



Fabric Light Boxes

Simple To  
Build.

# Compact.

"Having used various exhibition systems over the years I can honestly say that the T3 system is the best by a long way. It is easy to transport, easy to put together and looks fantastic, with the added bonus that we can reconfigure and add to it in the future to suit different locations."

Michael Ingram  
DOROTAPE



Photo Booths

Requires  
No  
Skilled  
Labour.



Pop Up Shops

Possibilities



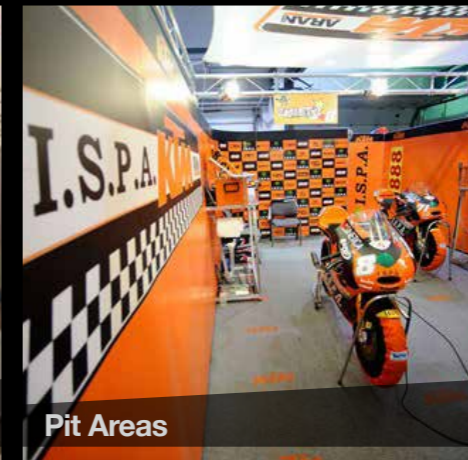
Big Red Bus - Halfway Up A Mountain!



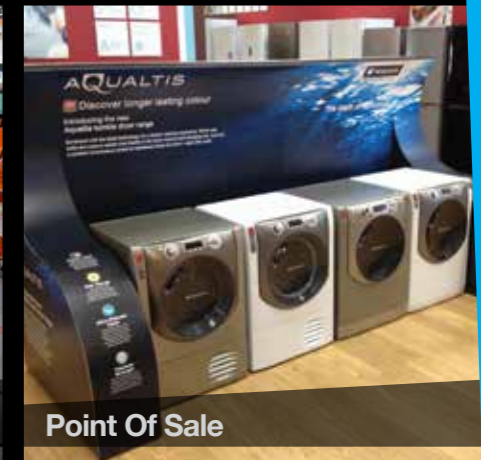
Hanging Banners



Small Stands



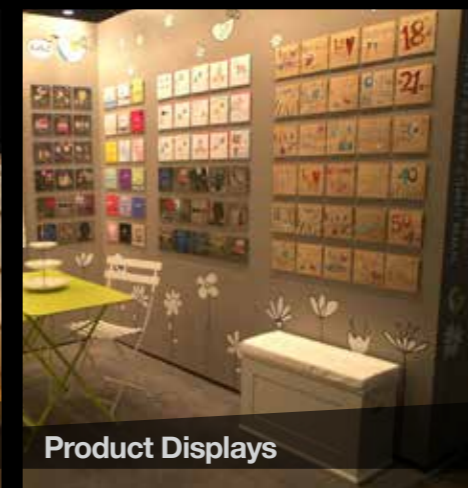
Pit Areas



Point Of Sale



Bespoke Finish



Product Displays

No  
Tools  
Required.



Built-in Projection Screens



Bespoke Features

Save  
On  
Shipping.



Pop Up Shops

Possibilities

# Portable.

"T3 has allowed us to fulfil clients budgets and briefs, saving them shipping, labour and storage costs over conventional stands."

Peter Scull  
TOM TOM EXHIBITIONS



Retail Environments



Custom Modular



Demo Areas

Modular  
System  
Bespoke  
Finish.



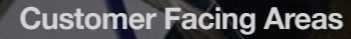
Museum Backdrops



17m Long Fabric Wall - Built In Less Than Half An Hour

**“We’ve been using the T3 system for three years now and calculated it saves us 20-30% of our exhibition costs.”**

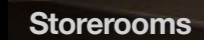
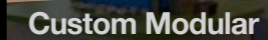
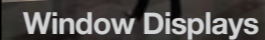
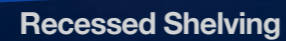
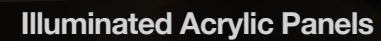
**Nik Hughes**  
**BAE SYSTEMS**



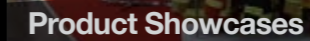
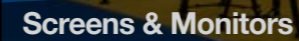
# Dynamic & Easy To Use.



# Possibilities



# Cost Effective.





Exhibition  
Stands  
Conference  
Sets  
Retail  
Solutions  
Bars &  
Counters  
Light Boxes  
Experiential

T3 Systems are protected by  
the following Design Patents, Patent  
Applications and Design Registrations

UK 06 12 683.3  
International PCT/2007/002306  
UK 06 09 032.8  
EEC 524 970  
International PCT/GB2007/001633  
EEC 862.644  
EEC 984.265-1/2/3  
PCT/EEC1003396.2

UK 06 23 361.3  
EEC 626.825  
USA 29/285.162  
China 2007 30 006 801.X  
Canada 119.708  
India 208 826  
International PCT GB2007/004377  
551 536